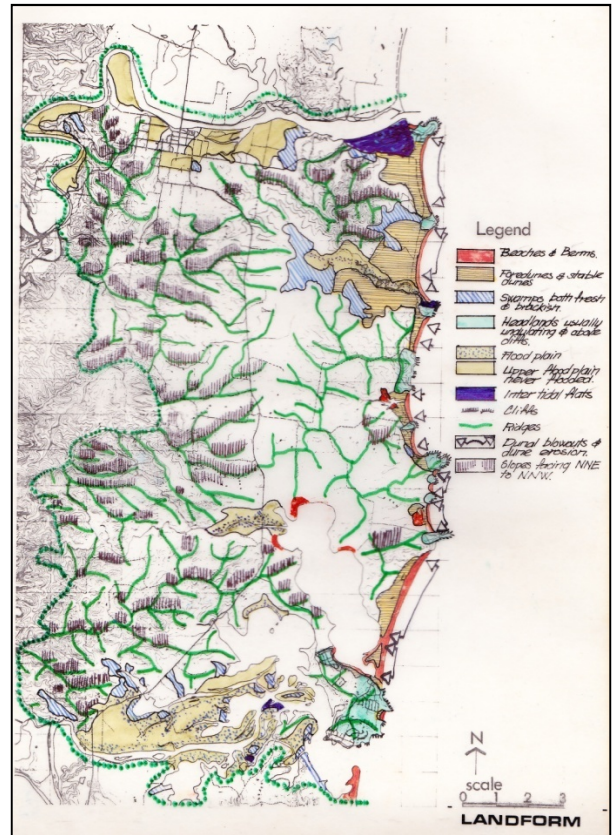


Broad acre planning, land-use & management planning

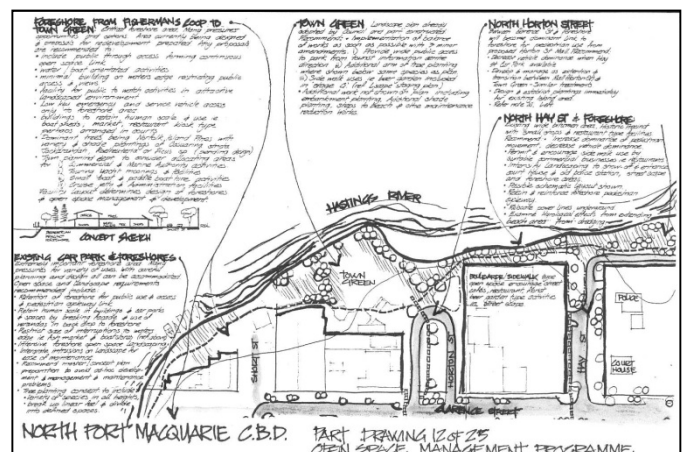
Regional, shire-wide or broad landscape planning expertise stems from the ability to assess, analyse & evaluate land attribute constraints & opportunities, and optimally marry them to with the needs and demands on the landscape for maximum benefit & minimal disturbance

Project examples include:

- § Multiple land-use planning for the 500 square km of coastal strip on the NSW south coast, incorporating various types of development & protection & developing broad structure planning proposals.
- § Port Macquarie Open Space Management Program, developing design, management development and maintenance recommendations for some 900 ha of varied open space areas.
- § Port Macquarie's Area 13 Koala habitat assessment & management, mapping for KPS (pre SEPP 44).
- § Development resource assessments and concept plans for large subdivisions, intended for progressive development & release.
- § Master Planning of large Reserves such as Bonny Hills, 20ha of varied issues and intensities of use,
- § Various reports & contributions to zoning and Development Control Plans including: Port Macquarie's Town Centre, West-Port Macquarie, Hastings River Drive area, south Dunbogan, South West Rocks, Nambucca Heads and Narrabri.
- § Plans of Management and Management Plans have including: Crowdy Bay, Arakoon SRA, Hamilton Green, Blue Gum Hills Regional Park (Hunter Valley), Roto House and several Cemeteries.
- § Broad-acre Vegetation Management Plans including: Partridge Creek VMP final, Sovereign Hills; Riverpark Estate, Sancrox; Acacia Ave area, Port Macquarie.



Broad-acre land-use planning



Open space management planning

Bonny Hills Reserves planning



